

Comune di San Basile
(PROVINCIA DI COSENZA)

Piano Strutturale Comunale
Legge Regione Calabria 16 aprile 2002, n. 19 e s. m. ed i.

Progettisti incaricati
prof. arch. **Alessandro Tufino** (diresioni prima della consegna del presente elaborato)
prof. arch. **Federico Parise**
ing. **Giovanni Soda**

Consulente progetti speciali e normativa
Ing. **Massimo Cristiano**

Collaboratori
Ing. **Gianfranco de Tullio**
Ing. **Massimo Cersosimo**
Ing. **Clelio Gelsomino**

Analisi storiche e tipologiche
arch. **Manuela Zicarelli**
dott.ssa cons. **Giuseppina Ambrogio**

Il Responsabile del Procedimento **Il Sindaco**

Deliberazione di approvazione C. C. n. del

Il Segretario Comunale

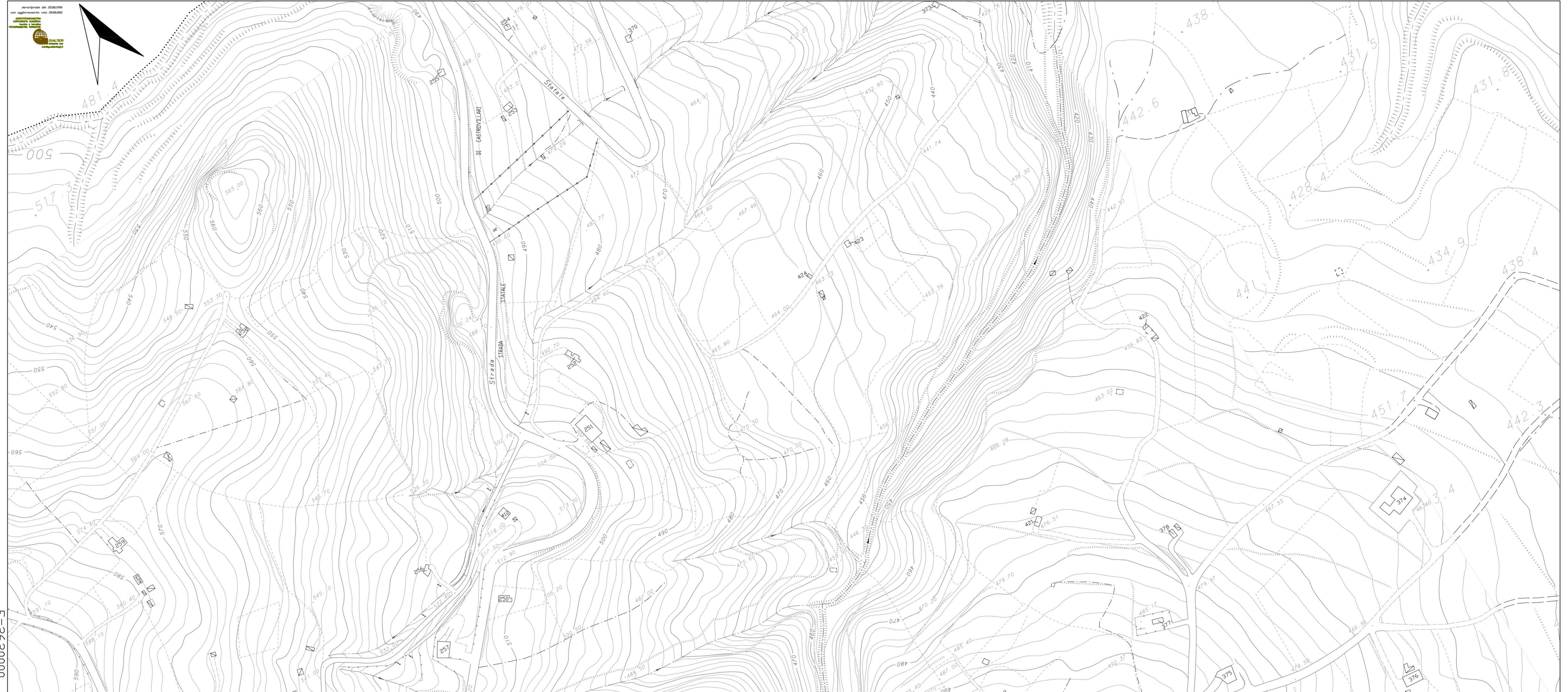
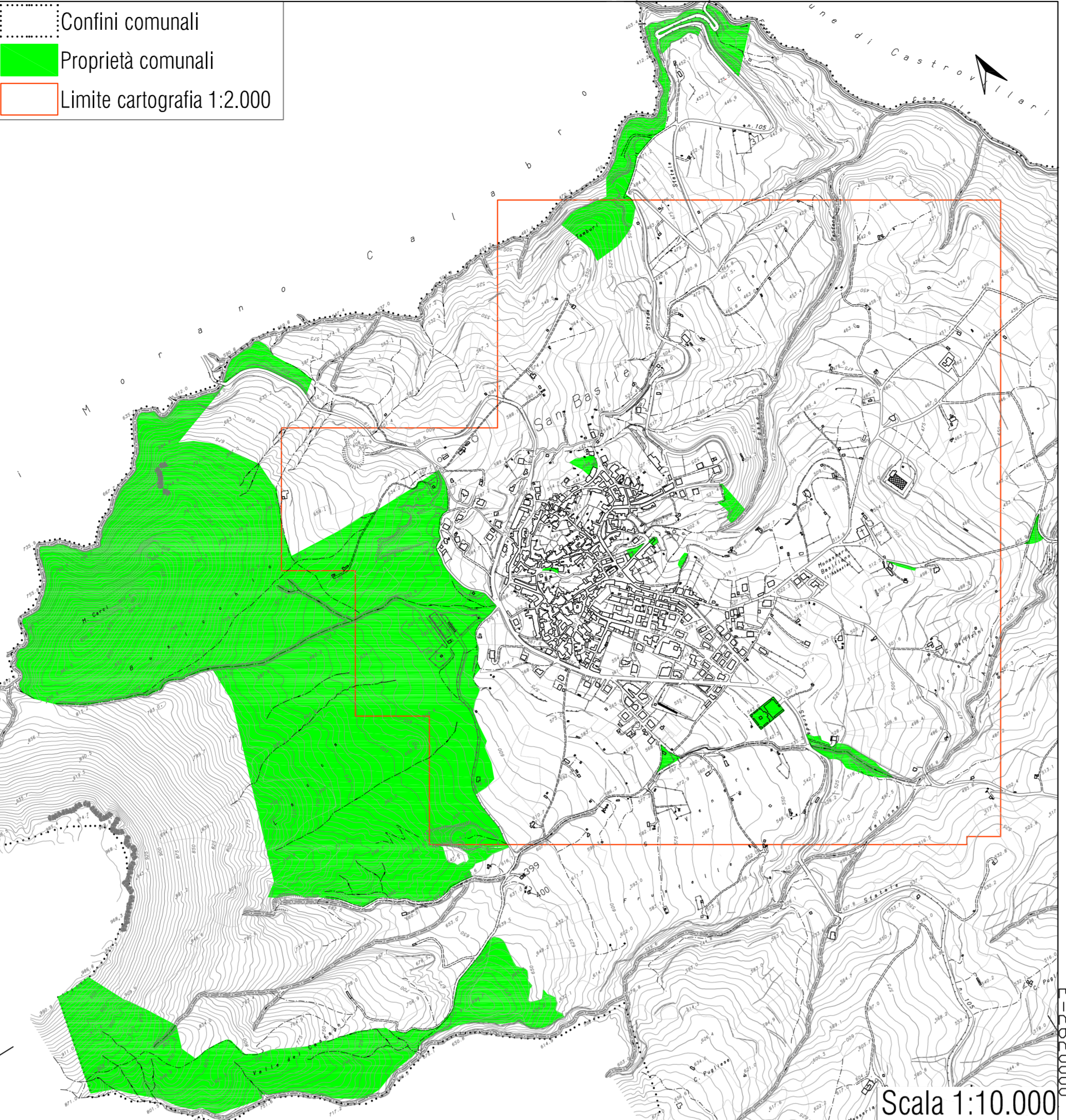
Elaborato *Scenario di riferimento*
A.1.2.3
Quadro di riferimento normativo e di pianificazione

Scala
1:2.000
1:10.000

Data
2006

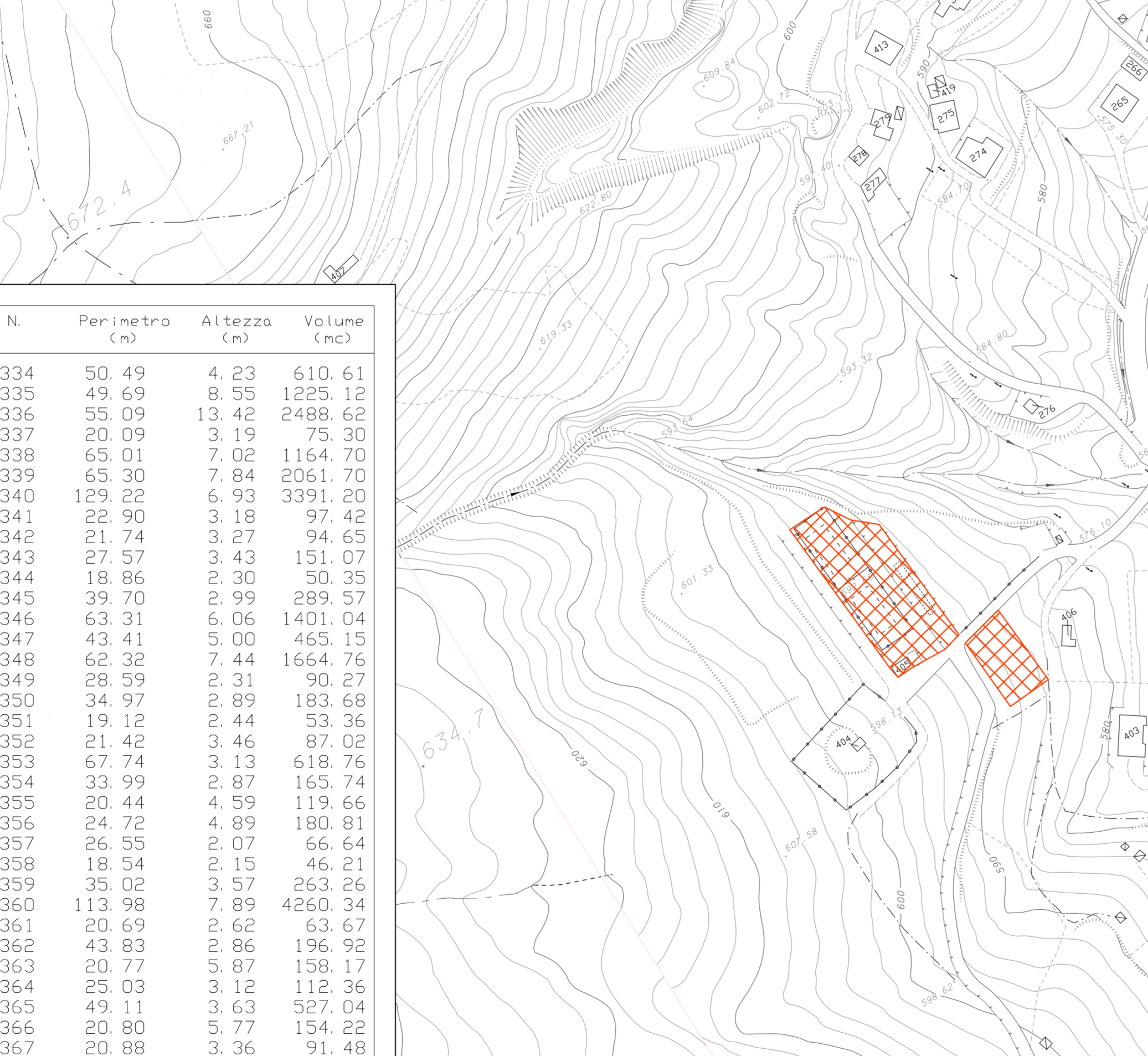
Le proprietà comunali, la consistenza edilizia ed i servizi: volumi, attrezzature pubbliche e di uso pubblico

N.	Perimetro (m)	Altezza (m)	Volume (mc)
167	49.83	3.66	386.64
168	21.63	3.01	85.66
169	36.33	4.82	375.73
170	94.03	3.36	1223.79
171	53.63	3.07	338.70
172	35.43	2.63	150.59
173	116.53	6.88	4931.65
174	116.53	12.17	6973.78
175	56.25	10.85	1219.66
176	56.85	7.42	1293.76
177	14.17	7.98	159.41
178	67.39	5.21	939.32
179	79.76	8.76	2629.40
180	54.58	5.27	704.45
181	25.71	0.05	65.65
182	21.87	1.87	56.05
183	47.94	7.62	1074.38
184	25.09	2.26	159.41
185	54.86	7.39	1194.40
186	31.61	3.42	201.44
187	69.56	7.94	1793.67
188	62.57	8.48	1893.75
189	30.01	3.11	157.63
190	39.68	4.22	406.15
191	154.61	6.98	5365.92
192	56.78	6.07	1139.20
193	33.15	3.36	222.86
194	46.59	8.33	1155.99
195	50.20	7.32	1204.91
196	78.88	8.05	2150.66
197	98.09	5.80	1771.94
198	26.62	3.96	134.42
199	59.34	8.15	1769.53
200	61.89	6.55	1511.57
201	82.50	9.30	3405.91
202	48.10	7.06	1018.41
203	63.89	9.53	1983.86
204	139.83	10.19	5626.71
205	102.07	7.54	3883.63
206	59.14	2.71	267.12
207	99.70	6.34	2190.18
208	92.81	10.92	3547.83
209	46.86	6.98	736.69
210	39.15	9.49	838.01
211	122.92	6.39	2400.45
212	52.03	10.81	1313.98
213	59.08	7.46	1622.72
214	27.34	7.64	356.14
215	24.73	7.20	247.63
216	68.11	8.64	1405.28
217	20.46	6.40	145.00
218	57.57	7.46	1520.94
219	93.56	4.71	1486.39
220	29.26	4.75	254.37
221	85.57	7.16	1778.51
222	34.68	4.12	288.60
223	33.23	7.98	415.18
224	38.59	3.59	221.75
225	66.23	7.41	1929.95
226	57.25	6.30	925.39
227	100.48	6.82	2928.56
228	41.00	3.69	373.41
229	61.54	9.32	2202.25
230	277.76	8.08	4091.99
231	95.92	5.50	1927.19
232	93.15	5.67	1808.41
233	63.23	9.11	1961.28
234	62.18	7.78	1734.32
235	75.39	6.83	1692.65
236	101.57	4.13	2292.52
237	52.36	7.85	1181.37
238	54.73	9.69	1773.03
239	56.86	10.58	1569.14
240	10.35	21.46	80
241	49.60	6.85	954.73
242	77.75	11.54	3626.71
243	49.09	8.83	1271.25
244	74.94	6.33	1909.06
245	62.46	7.55	1658.78
246	60.48	7.88	1628.30
247	64.70	7.12	1486.39
248	48.65	8.17	1150.26
249	69.51	6.93	1237.07
250	33.37	3.86	215.58
251	65.25	6.56	3529.21
252	41.76	4.02	203.96
253	24.10	3.40	115.65
254	17.88	1.78	45.33
255	22.09	2.67	112.02
256	26.76	3.03	111.34
257	49.00	5.66	830.94
258	38.63	3.36	1537.48
259	54.35	5.18	582.47
260	25.56	3.57	144.03
261	45.21	3.47	321.42
262	64.11	3.33	1869.76
263	66.51	5.63	1208.20
264	41.26	2.87	249.73
265	53.79	8.57	1549.02
266	36.11	2.38	172.89
267	44.78	8.34	871.98
268	55.48	7.22	1389.16
269	59.60	3.64	46.30
270	33.08	2.93	151.88
271	69.62	5.74	1258.17
272	52.06	5.37	931.39
273	21.56	4.22	122.27
274	67.54	5.34	1394.77
275	52.40	4.16	696.11
276	64.41	2.13	203.84
277	43.37	2.31	207.20
278	28.53	3.16	160.67
279	48.07	4.46	1497.81
280	39.65	2.12	154.20
281	53.97	9.66	1604.84
282	44.78	6.96	844.18
283	29.01	2.81	146.65
284	49.30	7.39	1016.52
285	19.60	3.14	75.16
286	36.44	4.04	1497.81
287	61.53	9.88	1880.47
288	61.05	7.61	1769.61
289	56.64	4.94	989.84
290	80.15	7.07	1875.89
291	55.95	7.06	1359.37
292	25.13	2.86	108.01
293	34.99	3.27	197.14
294	30.37	3.32	168.12
295	181.39	6.24	5470.55
296	73.06	6.42	1716.74
297	78.69	9.44	3201.45
298	59.07	5.21	973.12
299	65.10	12.01	3125.13
300	44.74	12.44	3046.90
301	36.56	4.22	556.15
302	46.67	3.26	318.58
303	52.59	4.71	631.67
304	74.07	7.75	715.20
305	31.63	2.66	141.73
306	16.20	3.89	63.25
307	58.43	6.87	1225.69
308	138.18	4.78	4815.75
309	111.73	8.48	6439.27
310	56.78	2.51	383.29
311	66.20	5.1	924.27
312	62.26	2.63	375.66
313	30.54	3.16	171.78
314	55.20	6.19	1520.64
315	55.98	9.90	1933.54
316	64.46	8.57	1669.26
317	61.40	8.68	1683.58
318	47.71	6.12	1259.97
319	21.08	2.04	55.25
320	35.03	3.52	209.80
321	47.86	6.19	1259.97
322	46.24	2.36	239.20
323	28.88	3.59	183.94
324	77.20	7.45	2553.46
325	71.01	9.17	1951.58
326	59.76	10.75	2311.28
327	59.01	7.18	1539.53
328	6.20	1005.31	156
329	53.63	8.12	1388.75
330	56.97	8.05	1510.63
331	58.87	10.88	2306.31
332	54.63	10.55	2306.31
333	32.78	1.88	125.60



● Municipio
ASL n.2
Struttura sportiva
Scuola
Struttura religiosa
Cappella privata
Museo delle icone
Anfiteatro
Poste
Edifici acquisiti dall'A.T.E.R.P.
Scuola materna dismessa

N.	Perimetro (m)	Altezza (m)	Volume (mc)
84	71.34	4.81	932.05
85	197.69	9.30	6279.33
86	58.17	7.21	1406.91
87	122.88	8.63	3654.70
88	32.69	2.66	130.50
89	65.58	6.56	1353.41
90	30.71	5.02	271.54
91	46.21	6.33	684.10
92	49.65	4.02	513.84
93	91.11	9.24	3157.29
94	113.08	8.04	4117.64
95	260.94	4.82	5880.39
96	24.62	4.11	149.00
97	156.68	6.60	5178.57
98	75.69	9.34	2565.66
99	35.34	2.89	163.98
100	237.97	6.47	5648.42
101	101.08	6.30	1756.60
102	141.00	6.29	3119.62
103	39.90	2.21	173.14
104	168.33	8.76	5484.75
105	98.14	5.04	1306.14
106	43.33	4.32	382.35
107	74.90	2.00	420.26
108	198.05	5.48	5302.09
109	142.07	6.64	2193.46
110	91.35	8.48	2526.70
111	51.37	6.95	770.46
112	142.07	8.20	1379.64
113	98.15	4.46	1262.84
114	42.88	5.97	685.72
115	27.88	2.74	127.49
116	116.10	6.72	2001.99
117	143.81	7.42	3507.09
118	47.18	10.31	1321.45
119	113.08	8.36	8964.93
120	29.99	3.59	194.86
121	51.21	5.99	957.19
122	251.17	8.25	9747.63
123	23.99	6.72	2001.99
124	133.57	5.34	3316.72
125	95.09	6.60	1577.07
126	238.03	6.98	7542.41
127	41.54	4.85	440.51
128	83.15	8.83	1943.60
129	152.74	6.39	3669.93
130	83.05	5.61	1191.75
131	48.70	6.80	1006.78
132	39.84	5.74	474.90
133	36.65	4.74	409.01
134	80.69	12.06	4243.30
135	61.15	6.33	1099.28
136	102.96	6.16	1696.52
137	108.08	4.77	409.01
138	115.30	6.76	3985.88
139	178.65	7.16	5665.83
140	246.46	8.12	8575.45
141	81.08	8.77	3004.75
142	59.81	3.30	528.09
143	59.25	6.56	964.79
144	21.24	7.05	368.20
145	81.79	5.71	1645.40
146	378.19	7.89	10851.66
147	55.51	6.12	8575.45
148	99.93	5.66	356.33
149	107.84	6.95	2497.89
150	98.26	8.11	2372.62
151	119.19	4.37	2001.99
152	57.81	11.30	2154.46
153	96.63	3.23	1294.07
154	47.71	5.71	611.75
155	43.43	5.30	1153.43
156	30.73	3.88	193.47
157	74.46	11.15	2692.03
158	86.63	9.30	2609.97
159	143.69	7.35	3969.08
160	192.27	8.77	8136.51
161	54.00	6.20	1005.31
162	36.52	6.88	403.41
163	37.34	2.77	173.44
164	58.89	3.29	445.97
165	18.50	9.19	1297.96
166	82.19	4.58	1246.98



N.	Perimetro (m)	Altezza (m)	Volume (mc)
334	50.49	4.23	610.61
335	49.69	8.55	1225.12
336	55.09		